

# ŽOLLERN

Solid metals. Fine solutions.

Drive Technology  
Rescue boat  
winches



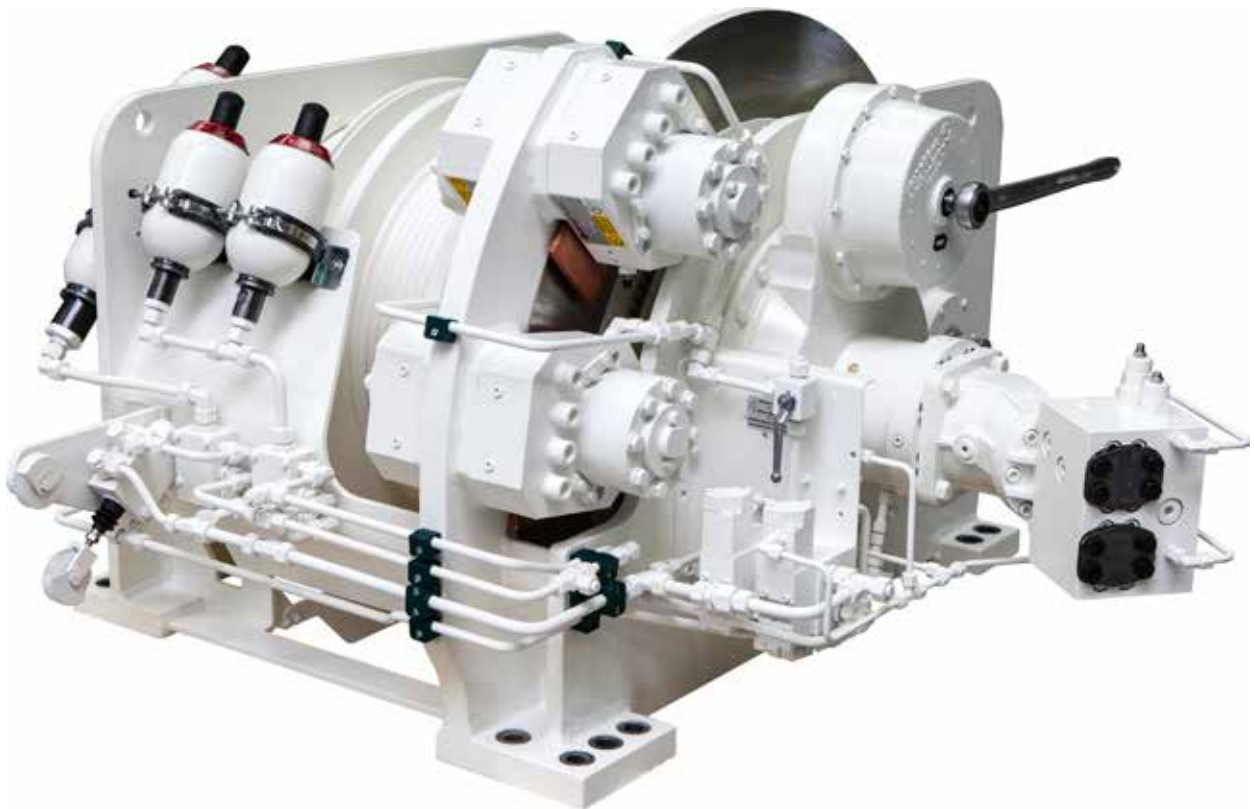
### **The ZOLLERN Group**

ZOLLERN is one of the pioneers in the metal industry. At several locations in Europe, North America and Asia, 2,000 employees develop, produce and service a wide range of high-quality metal products. ZOLLERN supplies sophisticated solutions for a wide range of applications with its business areas of drive technology, investment casting, sand casting and forging as well as steel profiles.

Contents	Page
ZOLLERN rescue boat winches	3
Design features and equipment	4
Technical data	4
Maintenance and inspection of rescue boat winches according to IMO (MSC 96) or SOLAS rules	7

# ZOLLERN rescue boat winches

## Compact and reliable



Rescue equipment for ships and offshore facilities also needs to work reliably under harsh application conditions. With the ZR rope winch, we offer a rope winch series designed for use on rescue boats and ships as well as on offshore facilities and that meets demanding requirements.

The ZR rope winch series has four sizes, with rope tension forces of 28 to 105 kN on the rope drum.

It is designed as per the guidelines of SOLAS »Safety of Life at Sea« and certified by renowned classification societies.

### Application examples

- Rescue boats and life rafts
- Evacuation systems for offshore facilities
- Tender boat launching systems for yachts
- Free fall boat systems

# Design features and equipment

- Very compact design
- Gravity lowering device for uniform lowering of the load without an energy supply
- Remote activation of the gravity lowering device via a co-running line
- Manual operation via a hand crank or ratchet
- Hydraulic lifting and lowering operation

## Optional:

- Constant tension device (for sizes ZR 4.15 and ZR 4.20)
- ATEX approval

# Technical data

ZOLLERN Size	Max. rope tension force  (N)	Rope diameter  (mm)	Usable rope length  (m)	Rope speed of gravity lowering process  (m/min)	Manual drive possibility	Hydraulic drive
ZR 4.15	28,000	13	38.8	max. 80	2 ratios (With hand crank)	•
ZR 4.20	40,000	18	62.9	max. 80	2 ratios (With hand crank)	•
ZR 4.24	65,000	By customer request	By customer request	max. 80	1 ratio (With ratchet)	•
ZR 4.26	105,000	By customer request	By customer request	max. 80	1 ratio (With ratchet)	•



Standard rescue boat winch ZR 4.15

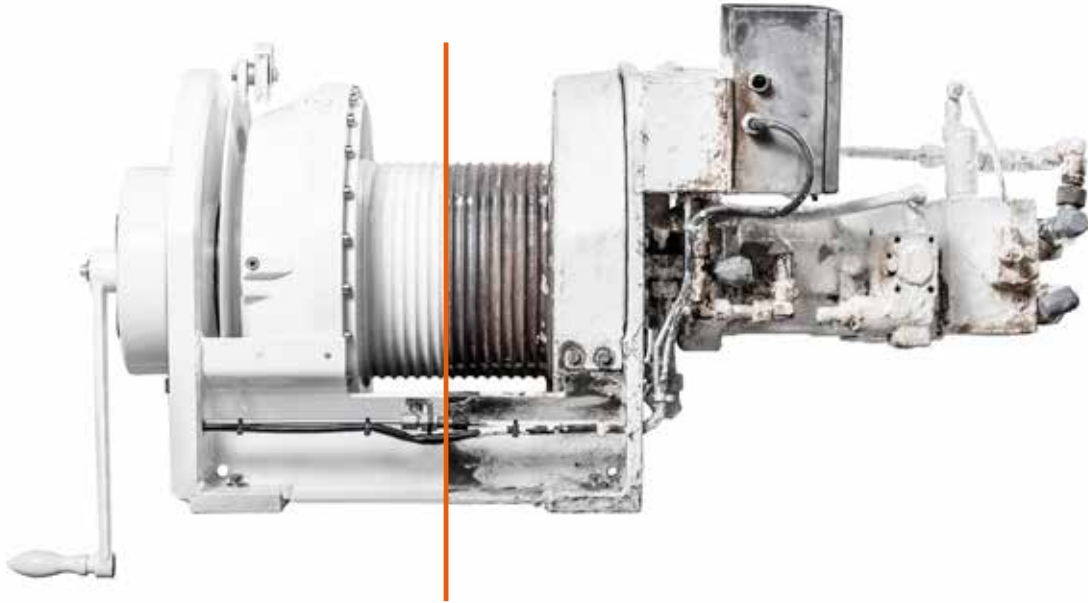


Rescue boat winch ZR 4.26, in custom-er-specific design

Gravity lowering device	Acceptance as per SOLAS	Acceptance as per MED	Constant tension device	ATEX approval	Mass without motor (kg)	ZOLLERN Size
•	•	•	on request	on request	240	ZR 4.15
•	•	•	on request	on request	480	ZR 4.20
•	•	•	—	on request	1,250	ZR 4.24
•	•	•	—	on request	2,100	ZR 4.26



# Maintenance and Inspection of rescue boat winches according to IMO (MSC 96) or SOLAS rules



Overhaul and repair of a ZOLLERN  
rescue boat winch

## Customer Service

ZOLLERN offers comprehensive service from the first product idea to the after sales service.

- Development partnership
- Technical and application-specific consultation
- Individual order processing, including scheduling agreements
- Comprehensive test run and test equipment (including load test)
- Intensive cooperation with classification societies

## Five-year inspection

During the five-year inspection according to the SOLAS rules III/3 and III/20, ZOLLERN or one of our authorised service partners offers overhauls and repairs, including a dynamic brake test of the winches. The inspections can be performed on site on land.

During this inspection, brake discs and stressed parts that transmit forces must be replaced.

## Ten-year inspection:

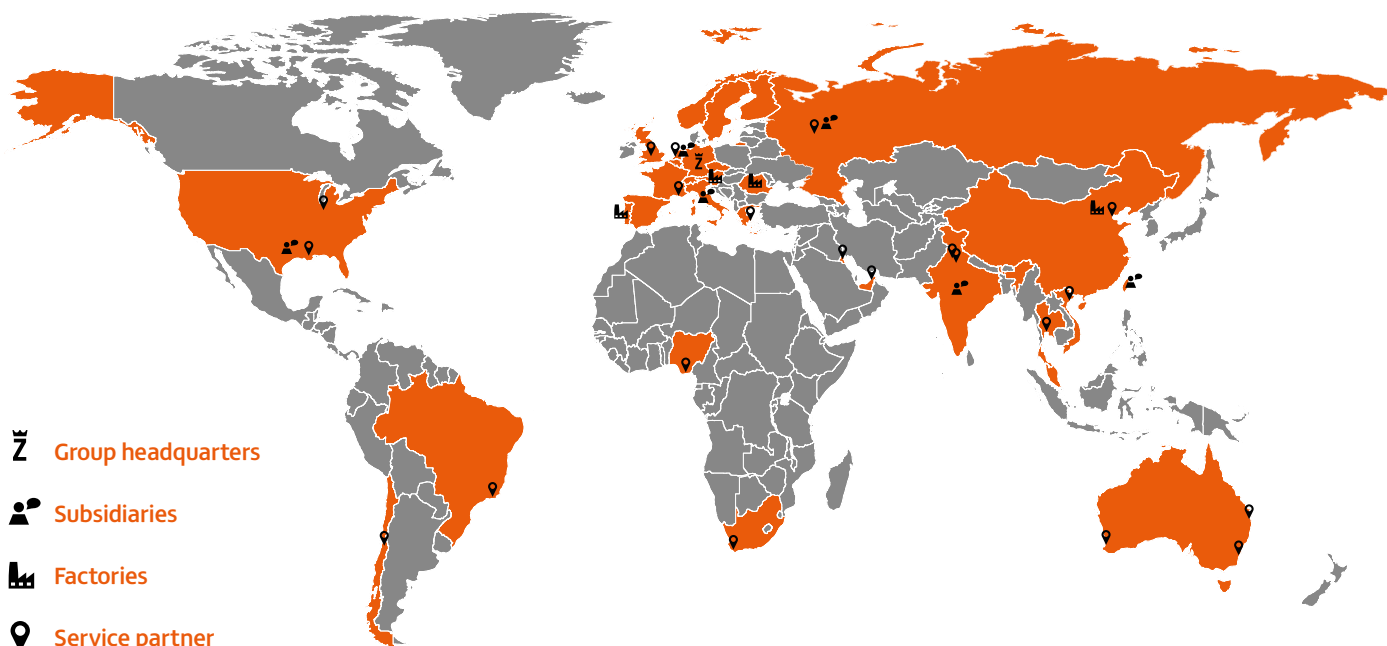
After 10 years, a complete overhaul (second life) of the winch is mandatory at ZOLLERN on site.

During this general overhaul, we also offer a re-certification by a classification society as well as a new warranty.

## After Sales Service

Maintenance and repairs are performed in the ZOLLERN Service Centre. The global service deployments and spare parts deliveries are coordinated from here.

- Commissioning on site
- Quick spare parts deliveries with original spare parts
- Technical findings with repair report
- Error analyses, repairs and assembly work worldwide
- Retrofitting, revision and repair
- Maintenance service
- ZOLLERN training centre
- Diagnostics and condition monitoring
- Service Hotline



# ZOLLERN

ZOLLERN GmbH & Co. KG

Heustraße 1  
88518 Herbertingen  
Germany  
T +49 7586 959-0  
F +49 7586 959-575  
zgw@zollern.com  
www.zollern.com

